

Fall Prevention in Geriatric In-patient Psychiatry

Second Annual Champlain LHIN
Senior Friendly Hospital and the
Rehabilitation Network of Champlain
Symposium: March 26, 2015



Mental Health - Care & Research
Santé mentale - Soins et recherche

Inter-professional Team

- Dietician
- Manager of Patient Care
- Nursing
- Occupational therapy
- Pharmacy
- Geriatrician
- Psychiatrist
- Physiotherapy
- Psychology
- Recreation therapy
- Social Work
- Support Services



Context

Geriatric psychiatry:

the study, prevention and treatment of mental illnesses experienced by adults 65 years of age and older or younger adults with age related dementia

43-bed geriatric inpatient psychiatry unit

Patient criteria:

with severe, multiple and/or complex psychiatric illnesses

Geriatric Psychiatrist:

Evaluated either in a community clinic, a long-term care home or hospital prior to admission.

Length of stay:

Less than 60 days

Source:

24% acute care, 45% LTC, 31% home

Continuous improvement and development of

FALLS PREVENTION STRATEGIES

Environmental Strategies for Patients at Risk

- Nursing screening for Fall Risk
- O.T./ PT assessment
- Use of bed sensors
- Room modification (e.g. bed height)
- Access to room with ceiling lift
- Use of wheelchair alarms



Improving Communication with Point of Patient Care Boards



Point of Care

Communication Board

- Who is responsible for care
- Pictogram showing level of assistance
- Mobility care plan
- Today's date
- Special instructions

AMBULATION

- Independent
- Supervision
- Assist x 1
- Assist x 2
- Follow with WC

GAIT AID

- None
- Cane
- Walker
- Hand in hand



ADAPTIVE EQUIPMENT

- Wheelchair
 - Self-propels
 - Needs assistance
- Wheeled commode
- Broda chair

BED SET UP

- Bed sensor
- Bed low height
- Bed regular height
- Bedrails
 - Window side: UP/DOWN
 - Door side: UP /DOWN
- Mats: YES / NO

ASSISTIVE DEVICES

- Glasses
- Hearing aids: Right / Left
- Adaptive clothing
- Gown only
- Dentures: Upper/lower
- Other: _____



Educational Initiatives

- Safe Patient Handling Modules
- Delirium Module



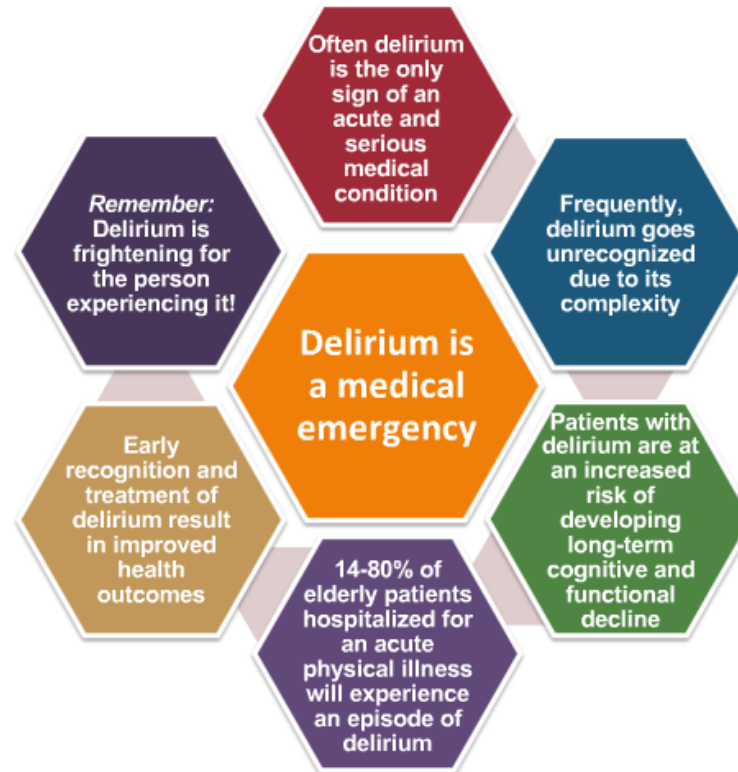
BE SAFE SOYEZ PRUDENT



Menu

1. Instructions
2. Acknowledgement
3. Learning Objectives
4. What is Delirium?
5. Delirium Facts...
6. Subtypes of Delirium
7. Did you know?
8. Knowledge Check
9. Assessing Delirium
10. Assess Risk Factors
11. Assess Symptoms
12. Apply CAM
13. Look for Cause
14. Did you know?
15. Knowledge Check
16. Assess and Treat
17. Apply Intervention Strategies
18. Did you know?
19. More about Delirium...
20. Knowledge Check
21. Outcomes
22. Summary
23. Questions?

Delirium Facts...



< BACK

NEXT >

Walking Program with OT/PT Assistant



New initiative: Strength and Balance Group



THANK
YOU!

